



件 : -01-19-A-07-A08

: 01

: 2018.9.17

1

3

# PD300-TO46-BL Series

## Features:

D C  
C-B 1310 ; -B

## Applications:



## Specifications:

### Absolute Maximum Ratings:

Parameter	Symbol	Min.	Max.	Unit
		—	20	
C		—	50	A
	A	—	30	
		-40	+85	°C
		-40	+85	°C
	—	—	260	°C
	—	—	10	

### Characteristics: (Ta=25°C unless otherwise noted)

Parameter	Symbol	Test Conditions	Min.	Typ.	Max.	Unit
A D	D	—	—	300	—	
B	B	=-10 B , , =5	400	600	—	
	@1310	=5	0.8	0.9	—	A/
	@1550	=5	0.9	0.95	—	A/
D C	D	=5	—	0.1	0.6	A
C C	C	=5 , =1	—	4.0	6.0	
		—	1100	—	1620	

:// . - .

: +86-592-3898601

: +86-592-5703588

@ - .





件 : -01-19-A-07-A08

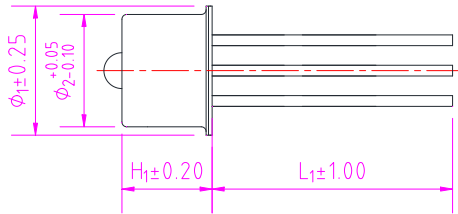
: 01

: 2018.9.17

2 3

		—	—	-5.0	—	
--	--	---	---	------	---	--

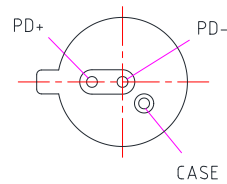
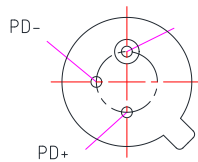
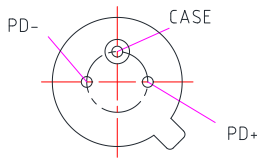
### Mechanical Dimension and Pin Assignment:



Type A

Type B

Type C



### Standard Product List:

	$\Phi_1$ ( )	$\Phi_2$ ( )	$l_1$ ( )	$l_2$ ( )	
D300- 46-B ( )-A	5.4	4.7	3.75	14	D
D300- 46-B ( )-B	5.4	4.7	3.75	14	
D300- 46-B ( )-C	5.4	4.7	3.75	14	
D300- 46-B ( )-A	5.4	4.7	3.35	14	
D300- 46-B ( )-B	5.4	4.7	3.35	14	
D300- 46-B ( )-C	5.4	4.7	3.35	14	

### Order Information:

PD300 -  -  -  -

\_\_\_\_\_ :  
46

C \_\_\_\_\_ :  
B ( ) :  
B  
B ( ) :  
B

\_\_\_\_\_ :  
3  
4

\_\_\_\_\_ A \_\_\_\_\_ :  
A: A  
B: B  
C: C



---

件 : -01-19-A-07-A08 : 01 : 2018.9.17 3 3

**Statement:**

A - ;  
. A ;  
A - . A  
. A -

---

**Contact Information:**

A : 501-505 B , C , ,  
, C  
: +86-592-3898601, 3898608, 5318000  
+86-592-5703588  
@ - .  
:// - .